

The image shows a modern outdoor relaxation area. In the foreground, a white hot tub with blue water and several jets is visible. Behind it, a white-framed outdoor sauna with wooden interior paneling and benches is open. To the left, a white building with large black-framed windows is partially visible. To the right, a glass railing separates the patio from a lush green garden. In the background, a clear blue sky and distant mountains are visible.

RUKU

Sauna-Manufaktur

Outdoor Sauna

The pleasure of a sauna
in the great outdoors



2

The RUKU outdoor sauna

Do you have some space in your garden or on your (roof) terrace? We will plan and build the perfect sauna hut there for you: Individual in size, exterior form and interior fittings – featuring cutting-edge technology and built to perfection by the experienced craftsmen from the RUKU sauna factory.







Relaxation and pleasure

We will deliver your new outdoor sauna finished and ready for use to the designated site using a mobile crane. And when we leave, that's when the relaxation starts for you – with no tedious building work, dirt or noise.









Let us help you plan your
personal oasis of wellbeing

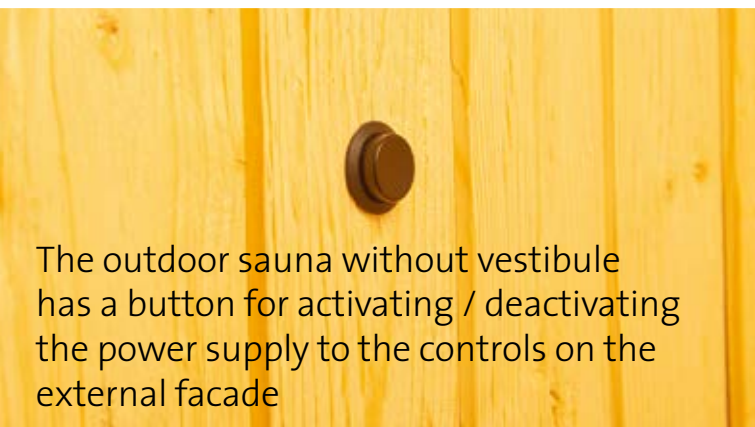
8











The outdoor sauna without vestibule has a button for activating / deactivating the power supply to the controls on the external facade





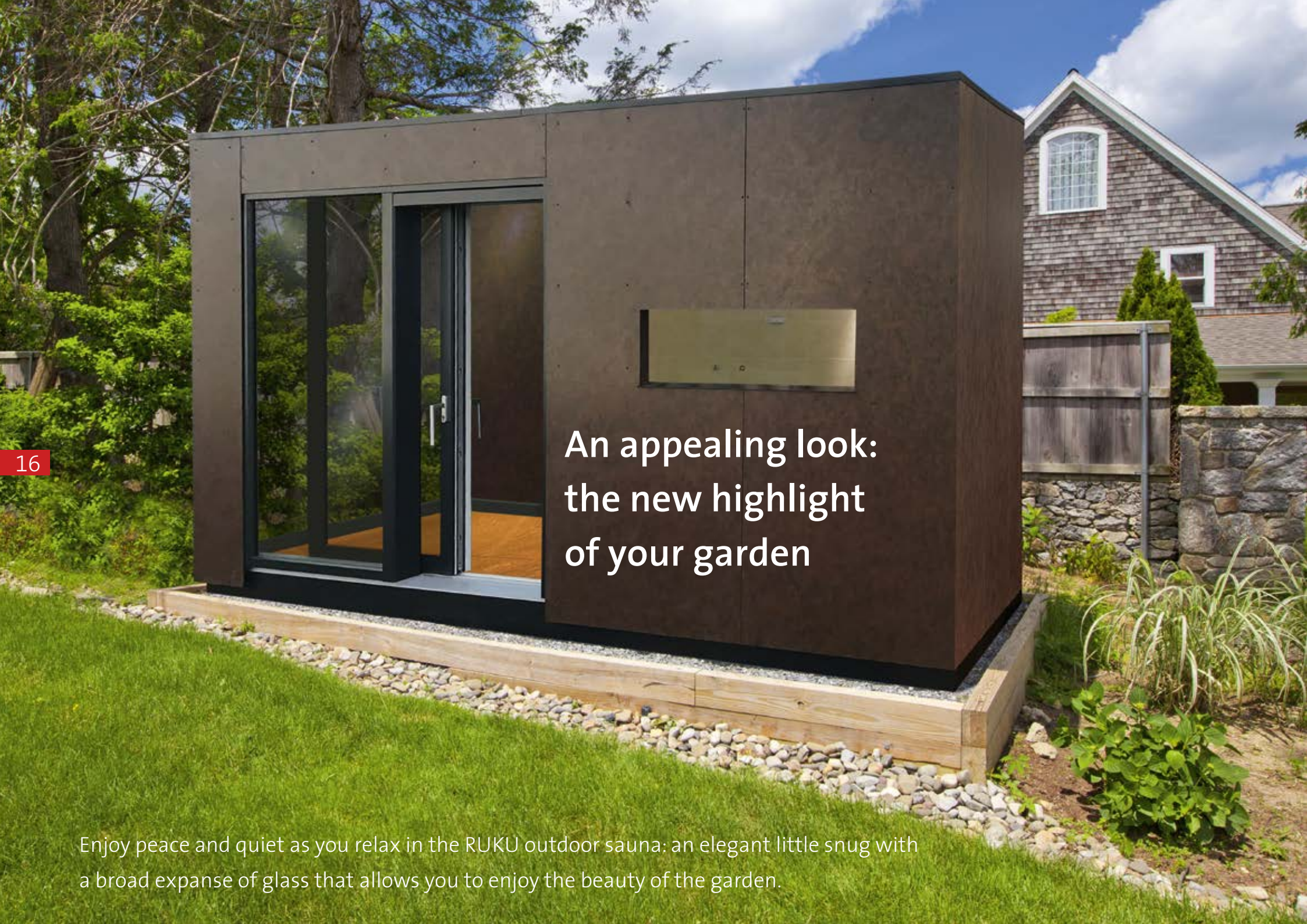




Workshop quality

The structure of the RUKU outdoor sauna is designed for a long lifespan under the toughest environmental conditions: sun, rain, ice or snow will not affect it – so you can enjoy many years of pleasure taking saunas in the great outdoors.



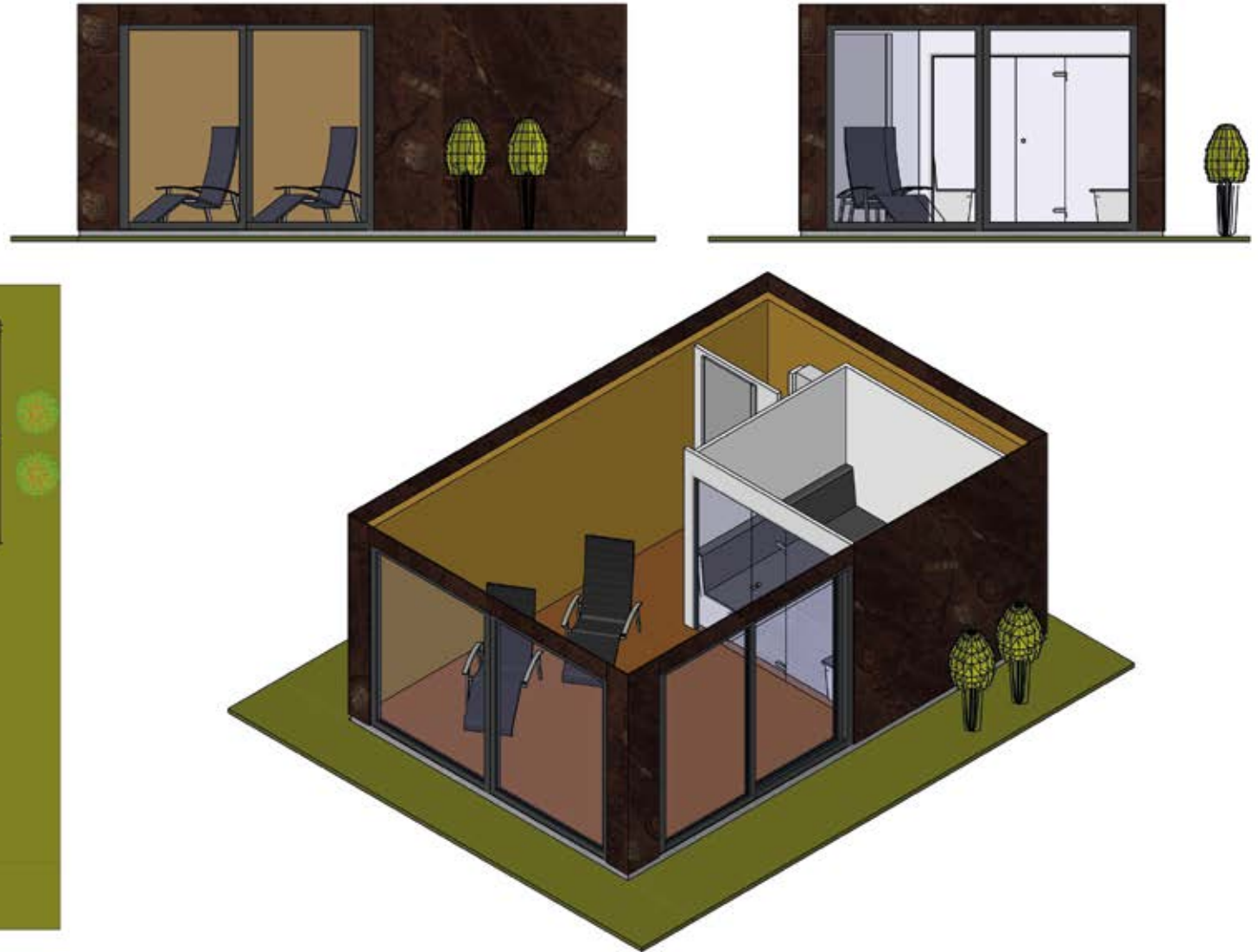


An appealing look:
the new highlight
of your garden

Enjoy peace and quiet as you relax in the RUKU outdoor sauna: an elegant little snug with a broad expanse of glass that allows you to enjoy the beauty of the garden.

Open to your individuality

For this design, the facade was clad in special 6-mm HPL decorative panels with a rust look.



The interior features a steam bath with technical compartment. The outdoor sauna was planned in such a way that after the steam bath, users could enjoy the view of the garden from the relaxation space.

Coming together
to bathe in heat:
beneficial for
body and mind

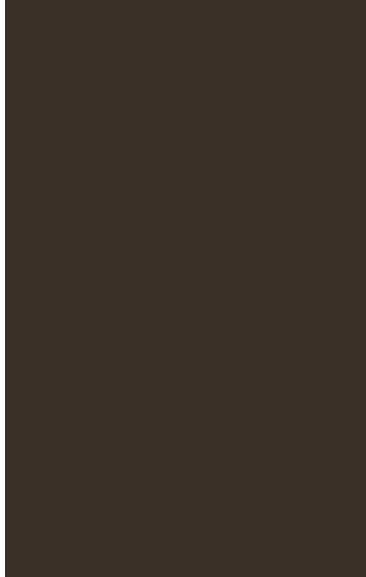




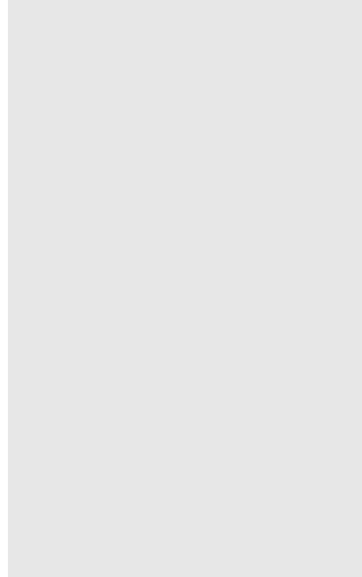
The interior can be finished in Nordic spruce, fir, hemlock or, as pictured, in retro fir, and horizontally insulated, chopped and brushed as required.

A modern, cubic sauna with a dark, anthracite-colored facade and a flat roof. The sauna has a wooden door and is situated on a wooden deck. To the left of the sauna, there are two wicker lounge chairs. The background features a wooden wall, a green hedge, and trees under a blue sky with scattered clouds. In the foreground, there is a wooden bench and a large rock.

Sauna on the terrace: a cubic floor plan with a flat roof, covering panel on the flat roof adapted in anthracite to match the facade panels.



Sepia brown



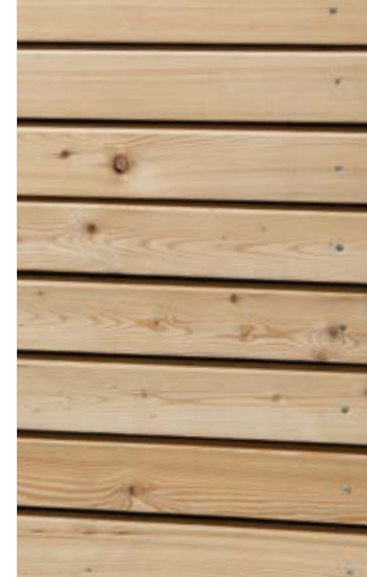
Telegrey



Traffic white



Anthracite grey



Larch

External design

For the external design you can choose from various materials according to your preferences: Elegant external cladding made from HPL facade panels available in four basic colours – we can offer you other colours on request.

So you like it natural? Then we will supply your garden sauna with a horizontal rhombus facade boarded in larch. If you wish, your sauna building can also be equipped with plaster base insulating panels for painting or rendering on site (see pages 6 and 32).

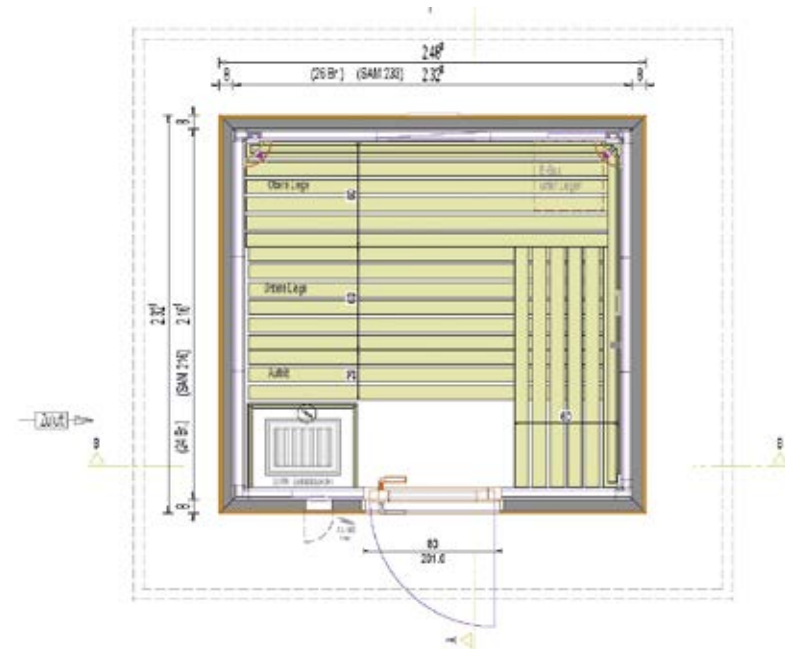


Model sizes

The RUKU outdoor sauna is available in five standard sizes with different variations. For all models, the size of the sauna cabin can be adjusted. Below you can find some sample models.

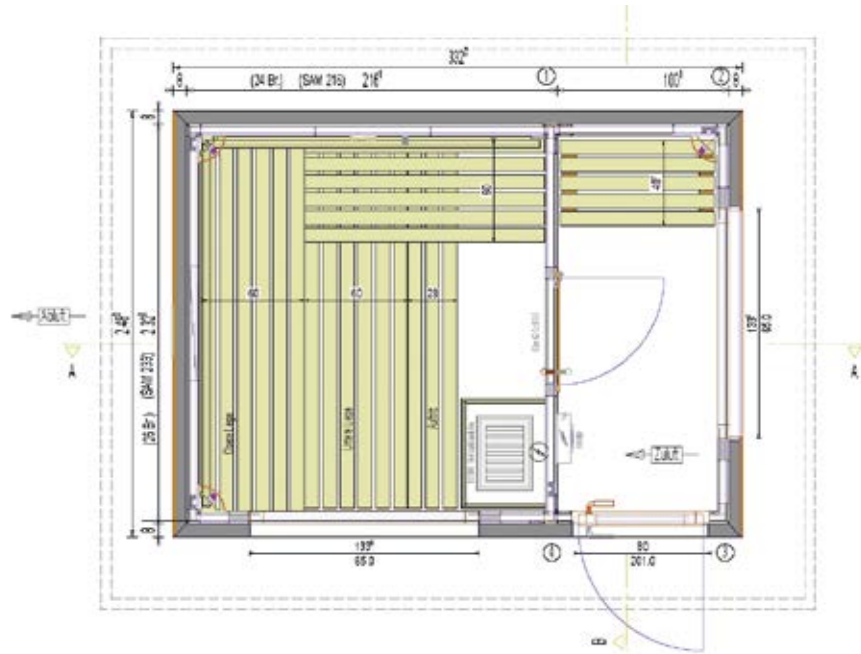
Model S is a compact outdoor sauna without a vestibule. Models S1 VR-100, S2 VR-150, S3 VR-200 and S4 VR-250 offer vestibules of various widths. Special sizes and bespoke versions are available on request – please consult our sales agents.

Model S without vestibule

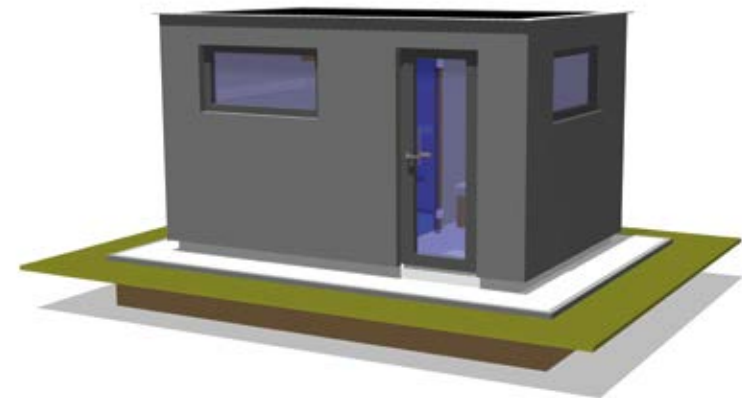
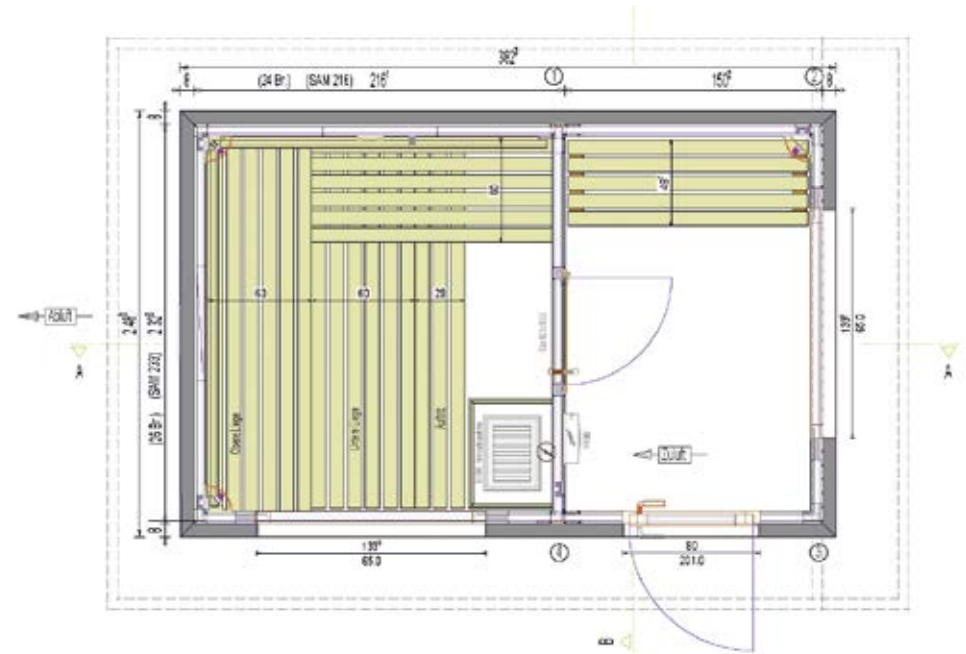




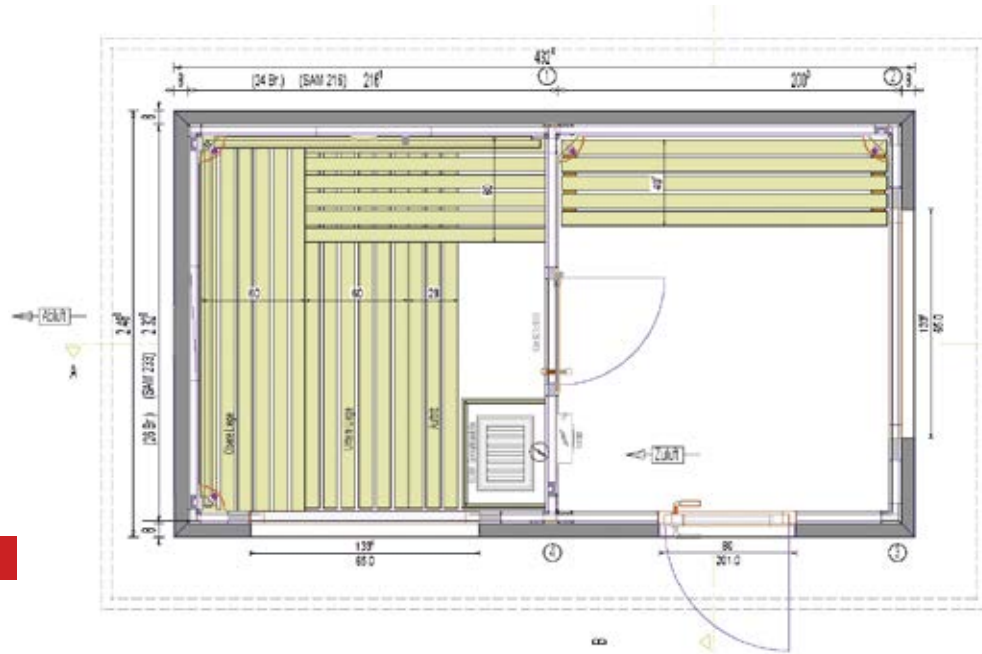
Model S1 VR-100



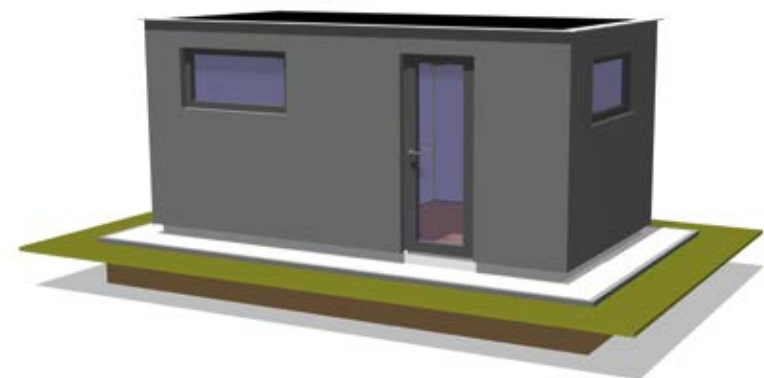
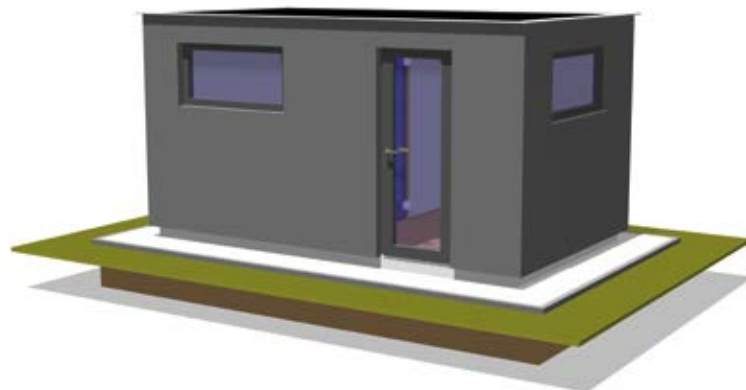
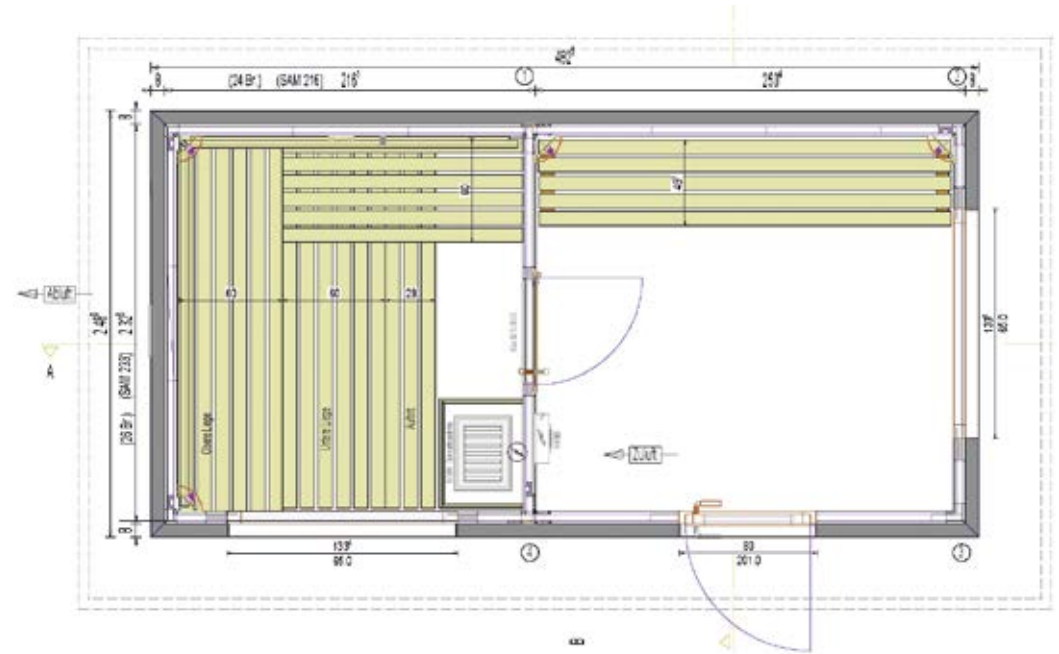
Model S2 VR-150



Model S3 VR-200



Model S4 VR-250

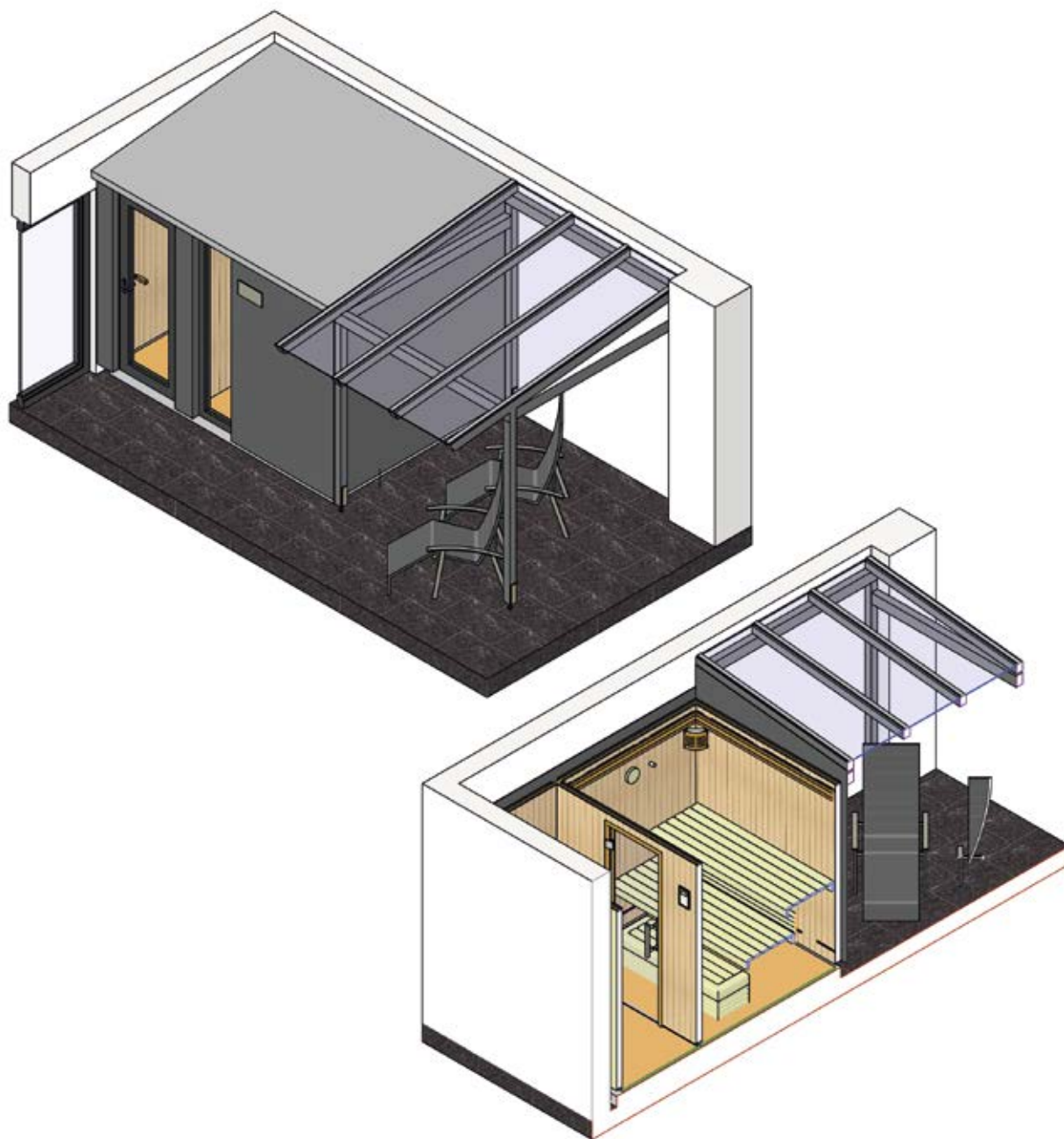


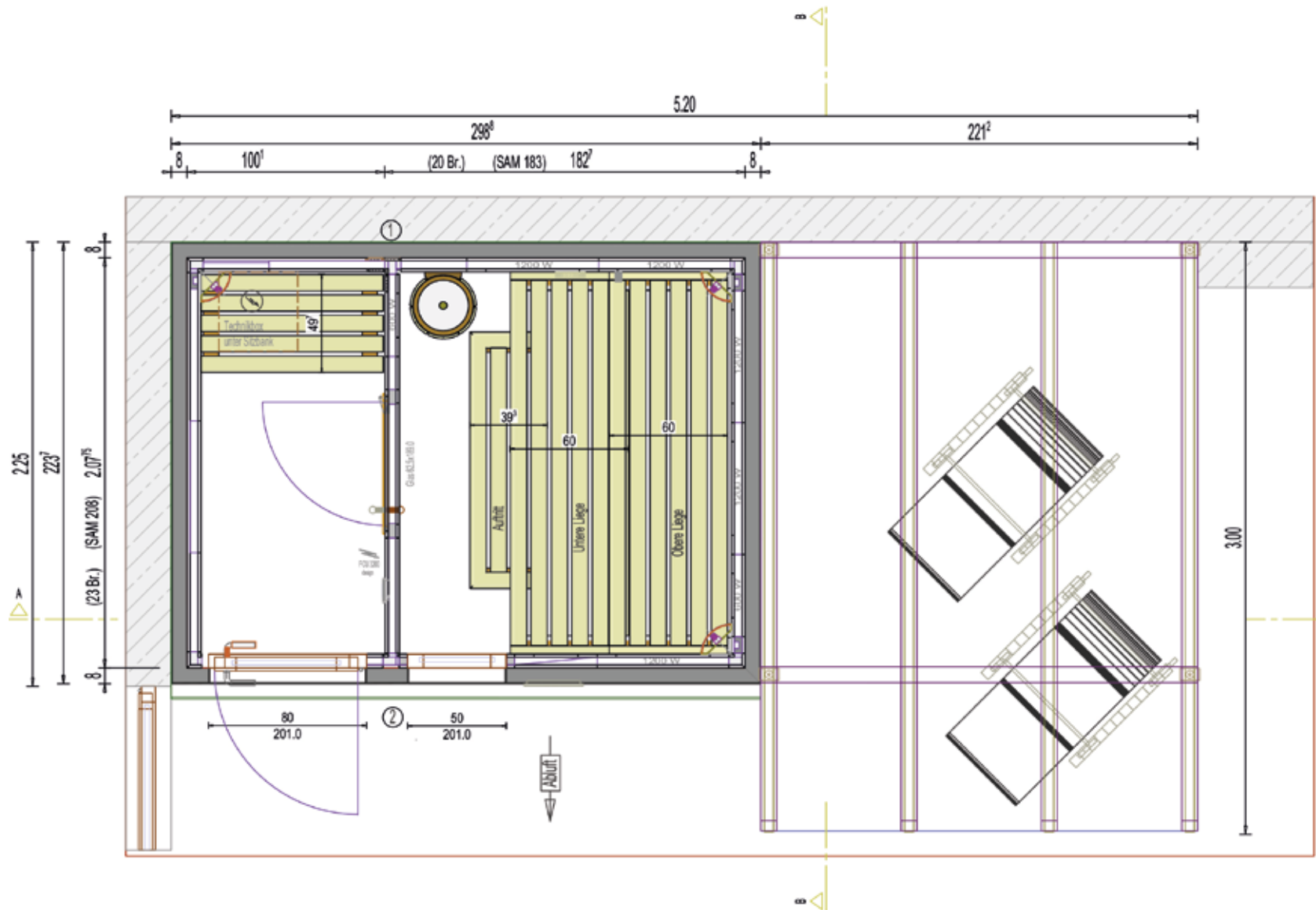


Planning for your preferences

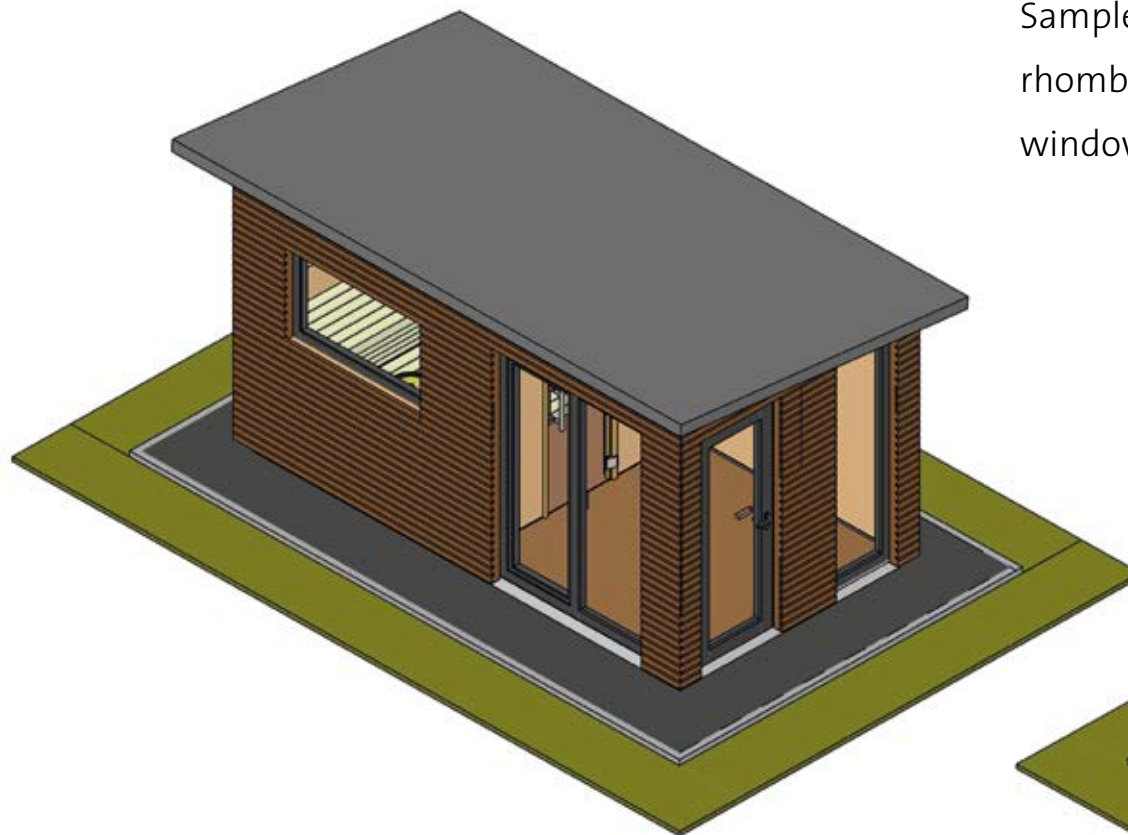
In our sample plans you can see your options for attaching a relaxation vestibule or a pergola to the outdoor sauna. Thanks to our individual planning and manufacturing, your imagination need know no bounds.

With HPL facade panels in four standard and numerous special colours or larch-rhombus shuttering running horizontally, we perfectly adapt the design of your outside sauna to your garden.

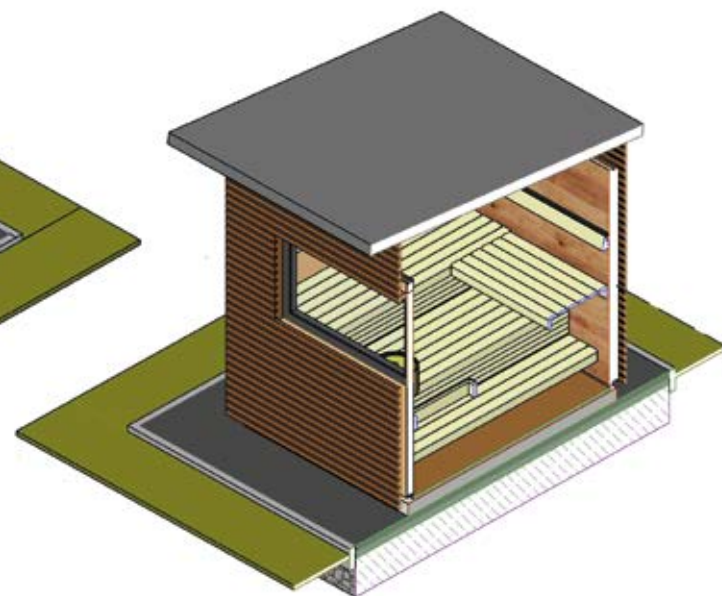




The RUKU sauna factory can cater to any requirements in its implementation of your outdoor sauna. Whether you want a glazed facade with wood or wood and aluminium, or integrated sliding or lifting doors, a Finnish-style sauna, an infrared thermium sauna or a steam bath – anything is possible. We plan and build your outdoor sauna for your terrace or your garden – tailored to your preferences.



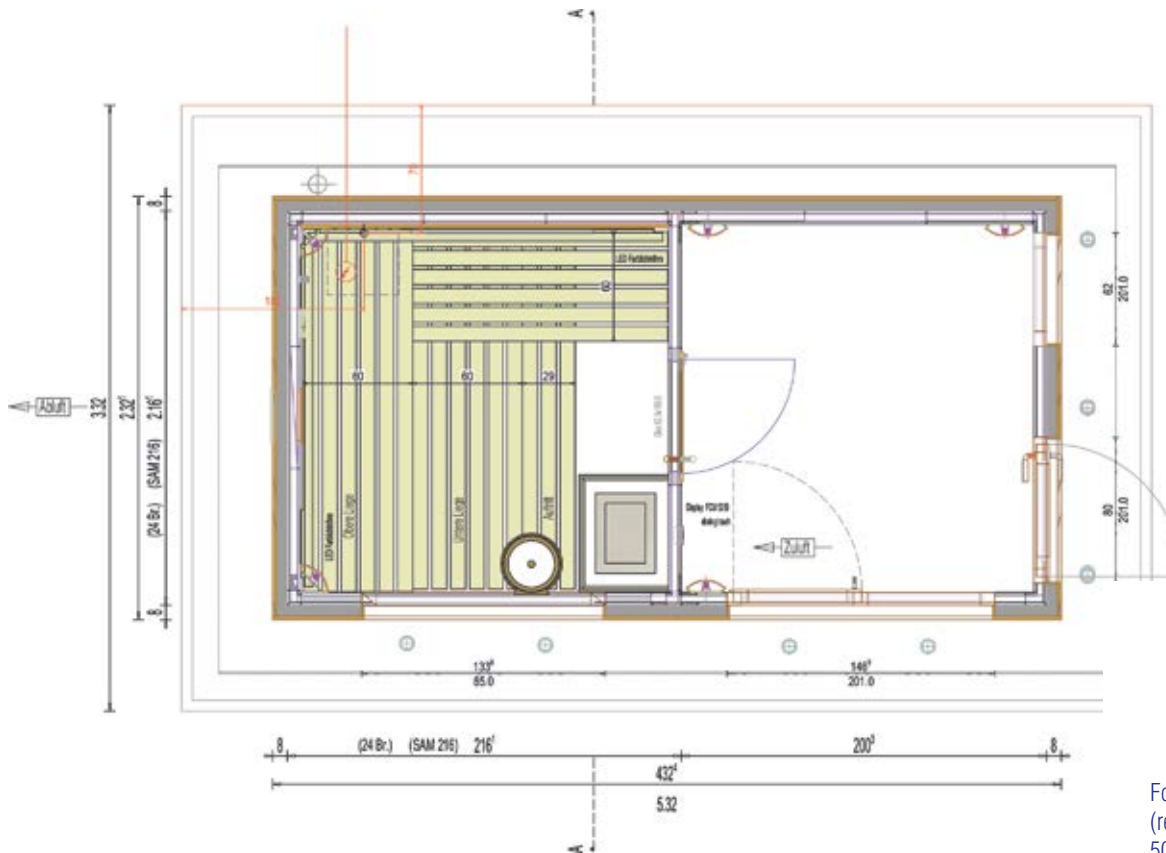
Sample plan with a combination of wood, larch/ rhombus shuttering and anthracite-coloured window and door elements.



A love of detail

All external saunas from the RUKU sauna factory are planned and produced with the utmost care and technical perfection. Our insulation technology Isoholz, which is unique in the world and does not contain any harmful fibrous materials, plays a significant role here. Our RUKU Isoholz is designed in such a way that it offers the best insulation quality for your outdoor sauna consistently over decades.

Electrical connection (laid in an empty conduit)
coming from the base plate has a cable length of 3.0 m

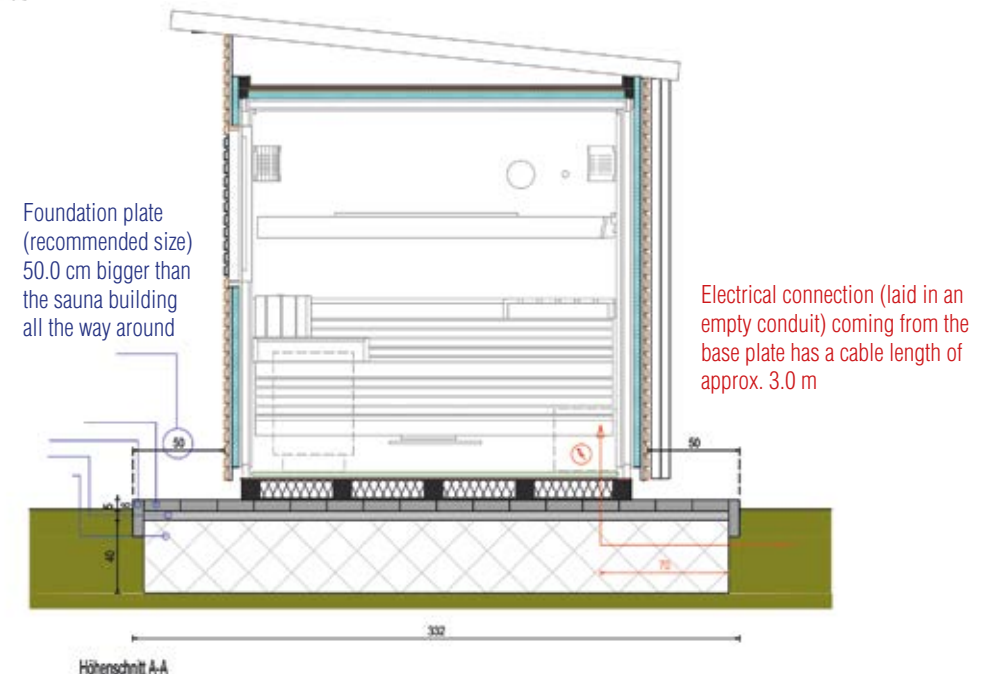


Foundation plate (laid on site) structure from top to bottom is
concrete paving stones 6.0 cm thick held together by a frame.
Split layer 5.0 cm, gravel layer 16/32 40.0 cm

Carefully considered technology

For your garden sauna, we plan not only the look and the individuality of the sauna or its vestibule, but also the technology with electrical connections and the necessary foundation plate, so that this can be prepared by you.

31





Simply unwind
for once
– enjoy peace
and relaxation





Other products from the RUKU sauna world:
classic sauna, infrared thermium sauna, steam bath, heated bench

In our exhibitions you can experience the RUKU sauna world for yourself. Or just give us a call. We would be happy to advise you and will introduce you to a sauna consultant in your region.

RUKU Sauna-Manufaktur GmbH & Co. KG

Dietenheimer Straße 39
89257 Illertissen, Germany

Tel. +49 7303 9051-0
Fax +49 7303 9051-131